



H3 series IP Camera user Manual

1	Installation.....	-2-
1.1	Requirement.....	-2-
1.2	Installation steps.....	-2-
2	Detailed instructions.....	-3-
2.1	Login and Logout.....	-3-
2.2	Software interface.....	-3-
2.3	Device management.....	-5-
2.3.1	1Add device.....	-5-
2.3.2	Group management.....	-6-
2.4	Image preview.....	- 7 -
2.4.1	Non-cycle preview.....	-8-
2.4.2	Cycle preview.....	-10-
2.5	PTZ control.....	-10-
2.5.1	PTZ control.....	-10-
2.5.2	Preset position configuration.....	-11
2.5.3	Image color configuration.....	-12-
2.6	Video managemen.....	-12-
2.6.1	Plan of record.....	-12-
2.6.2	Alarm Record.....	- 14 -
2.6.3	Manually Record.....	- 15 -
2.7	Playback.....	-15-
2.7.1	Playback by searching time.....	-15-
2.7.2	Searching-file Playback.....	- 16 -
2.8	Electron map.....	-17-
2.8.1	add map.....	-17-
2.8.2	Edit Map.....	-17-
2.8.3	Delete Map.....	- 17 -
2.9	Parameters configuration.....	-17-
2.9.1	Color.....	-17-
2.9.2	Video.....	-18-
2.9.3	Audio.....	- 18-
2.9.4	OSD.....	-19-
2.9.5	Network.....	-19-
2.9.6	Motion Detection.....	-19-
2.9.7	PTZ.....	-20-
2.9.8	System.....	-20-
2.10	User management.....	-21-
2.10.1	Add User.....	-21-
2.10.2	Delete User.....	-21-
2.10.3	Modify User Authority.....	-21
2.10.4	Modify User Password.....	-21-
2.11	Log.....	-21-
2.11.1	Log Retention Time.....	-22-
2.11.2	Inquire Log.....	-22-
2.11.3	Log Backup.....	- 22-
2.12	Other settings.....	-22-

1 Central Management

1.1 Installation

Requirement

Hardware condition:

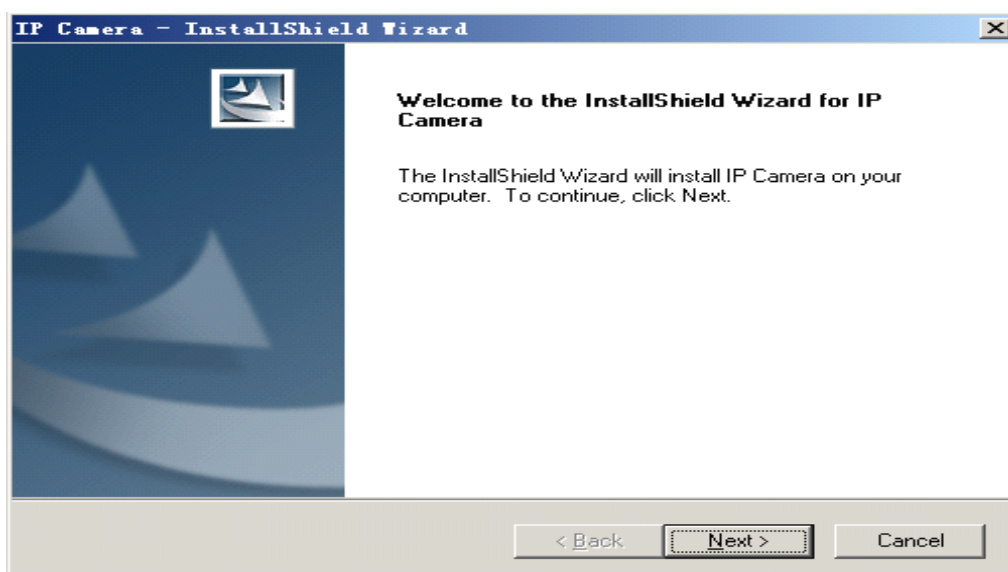
- 1、 Pentium IV series, CPU frequency above 2.0G
- 2、 memory above 2G
- 3、 hard disk \geq 120G
- 4、 monitor 1024×768 or above

Software condition:

Windows2000/WindowsXP/Windows2003/Windows Vista/Windows 7, recommendation Windows XP

1.2 Installation steps

Double click installation package, it pops up as below:



Select path then click “next”.

After installation, it creates an icon on desktop as below:

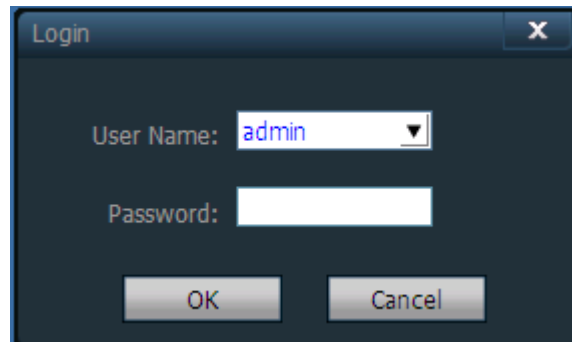


At program list as below:



2 Detailed instructions

2.1 Login and Logout

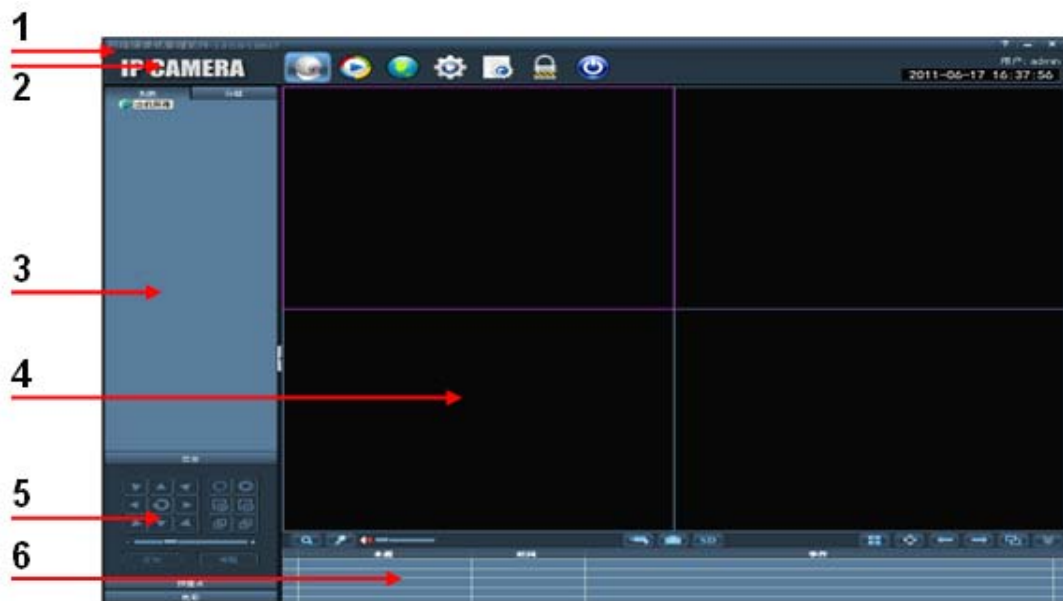


【Login】 the default user is admin and no password, click “ok”to access software main interface.

【Logout】 only admin authority can logout, user and guest authority can not

It needs to input administrator user and password when logout.

2.2 Software interface



Software interface includes six blocks:

1 system button list

2 label list

3 devices list

4 real-time preview

5 PTZ control

6 alarm info list

◆ system button list:

- ◆ help button, click to open client use manual
- ◆ hidden button, click to hide software to system hidden list
- ◆ exit button, click to pop up logout dialog

◆ label list:



LOGO information



Click to change to preview interface



Click to change to playback interface



Click to change to map operating interface



Click to change to configuration interface



Click to change to log operating interface



Logout or change user



Click to logout

◆ Devices list:

- 【List mode 】 display area, settings and channel from user set
- 【Group mode 】 display group and channel from user set
- 【Current screen】 display devices current screen connected, only available on List mode

◆ Real-time preview:



electronic enlarging button, circle an area after click to enable



audio talk button, select the right window then click button to enable, only support unique device to talk at one time



Listen button, click to enable/disable listen, support multi-listen



Record button, select the right window, click to enable/disable recording



Snapshot button, select the right window, click button to snapshot, support to snapshot twice in one second



SD card button, select window, click button to open SD card page to see inside information



Multi-picture button, click to enable multi-picture view



Full screen button, click to full-screen view of real-time-area view



Front group button, click to show the front group view on circleview mode



Next group button, click to show the next group view on circle view mode



Circle view button, single click to enable/disable



Devices list fold/unfold button, click to fold/unfold



Alarm information list fold/unfold button, click to fold/unfold

2.3 DEVICE MANAGEMENT

2.3.1 Add device

Firstly click “Config” button on label list to access device management page.

2.3 Device management

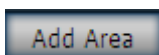
2.3.1 Add device

Firstly click “Config” button on label list to access device management page.

【Add list】

- ◆ At first time run, the default list is null, click “Add Area” button, pop up “Add Area” dialog, and input a name on name blank to add an area into device list. That is the first area, so there is no belonging area of it, it means the belonging area is null.

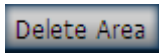
Notice: it can support 128 areas presently



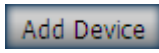
Add area into device list



Modify name of selected area



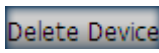
Delete selected area



Add device manually



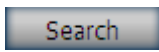
Click to pop up configuration dialog



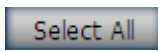
Delete selected device



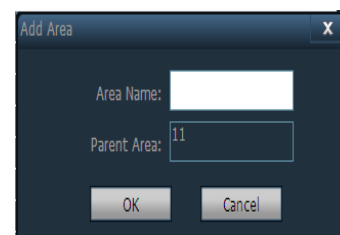
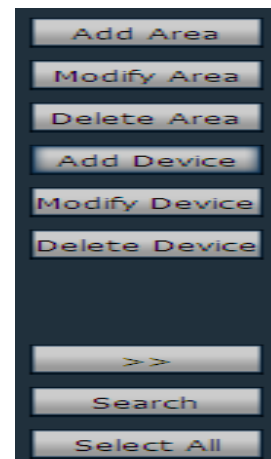
Add searched device into selected area



Click to search devices in LAN



Select all devices in list



【Add device】

- ◆ Search and add device in LAN:

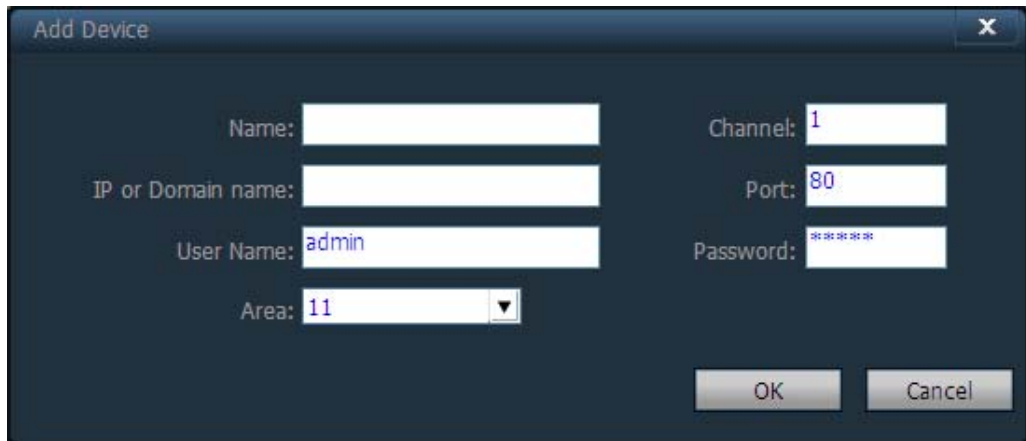
Click search button, then select device in search list to add, click



button to add device to area.

- ◆ Add device manually:

Click **Add Device** button then pop up add device dialog, as below:



【Name】 Device name, support custom, length less than 30 byte.

Only display name instead of IP after input name.

【Channel】 Support different channel on case that one device has many channels, presently device only supports one channel.

【IP or Domain name】 Device IP or domain name

【Port】 Device http port, default is 80

【User name】 Device login name, default is admin

【Password】 Device login password, default is admin

【Area】 Device displaying area

After input all needed information, click OK button to finish ADD

2.3.2 Group management

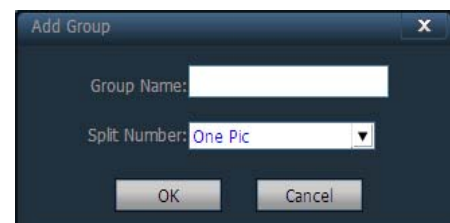
◆ Add group:

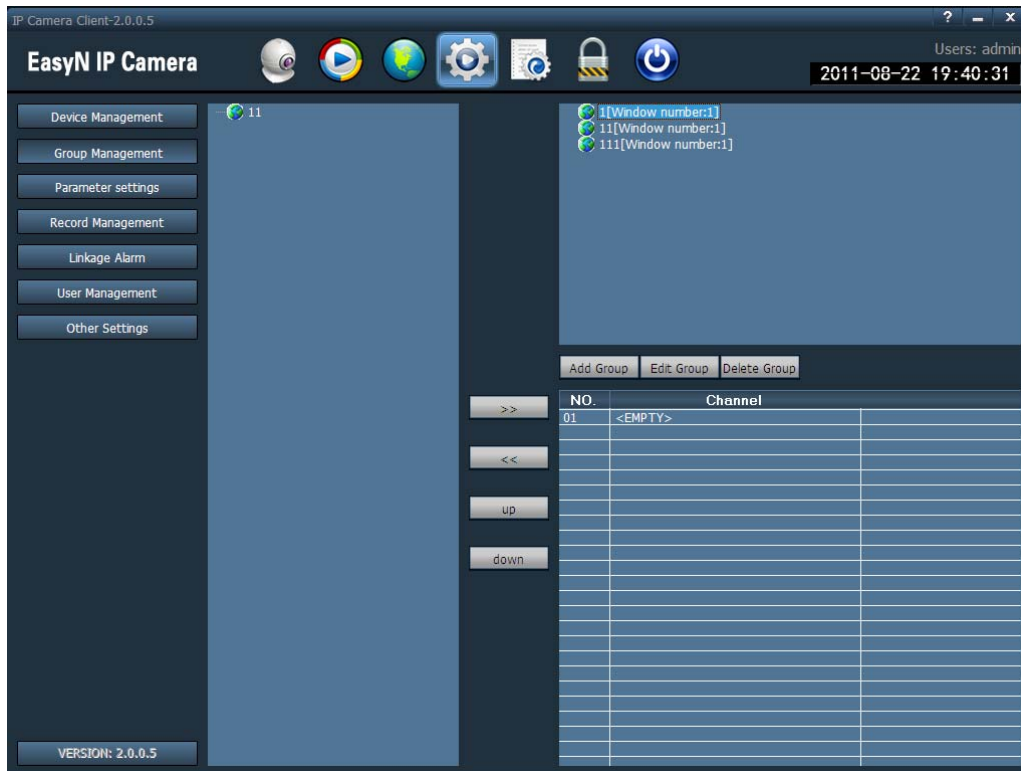
Click **Add Group** button, input group

name into pop-up dialog then click OK

Notice: support 20 groups

◆ Configure group





After add groups, configure groups

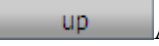
Configuration: select group, click “+” in front of device IP or name, then select


Channel 01, click  button to add device channel to group.

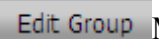
Notice: single group can support 16-picture view

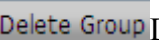
 Add device channel to the group

 Remove the device channel from the group

 Adjust the order to display devices in the group, selected device exchanges position with the front device

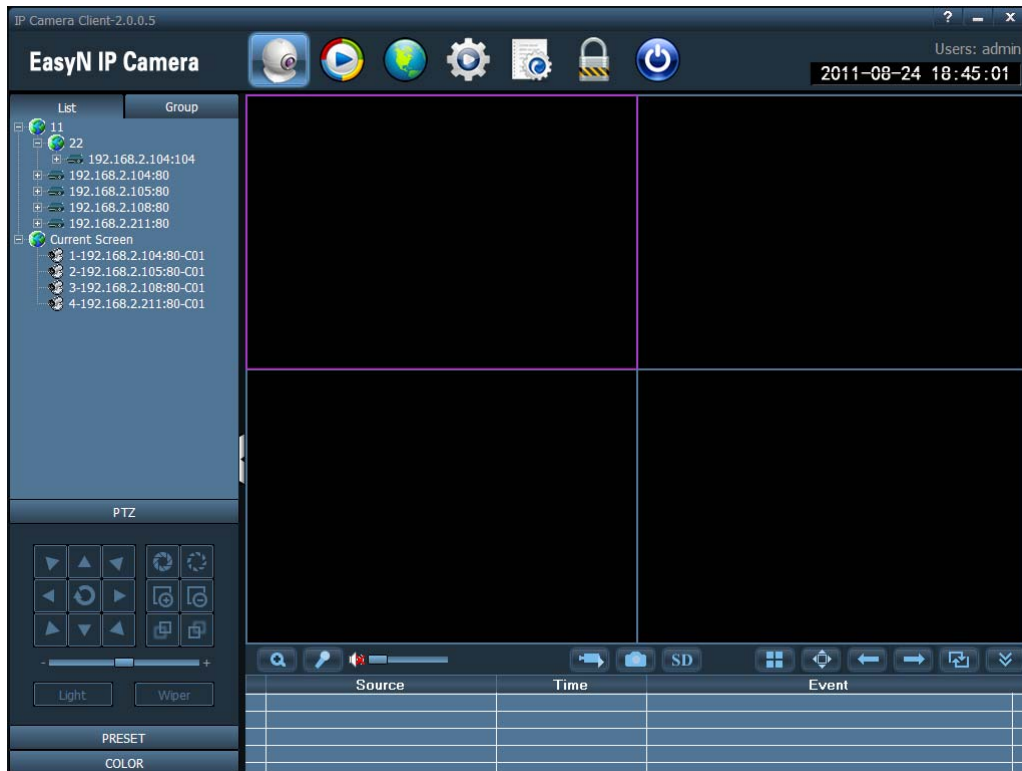
 Adjust the order to display devices in the group, selected device exchanges position with the next device

 Modify the group name and numbers of multipicture, clear group after modifying, need to create new group

 Delete group and devices in the group




2.4 Image preview

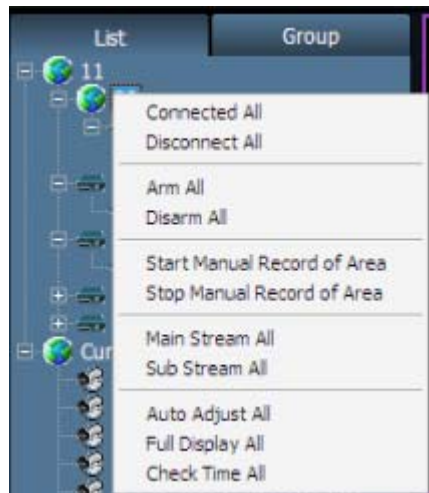
After device configuration, click “Preview” button to access main interface, devices list displays as list tree, click “group” or “list” to exchange information of group or list. Default viewing screen is 4-picutre, max support 16-picutre view.



2.4.1 Non-cycle preview



Click “+” in front of device’s name or IP, then double click Channel 01 or drag Channel 01 to the window to view video. It displays a blue triangle  after device connected Channel 01, if the display as , it means device does not connect. And if the display as , it means there is alarming. Right click on one area, it pops up dialog as:



【Connected All】 connect device in selected area

【Disconnected All】 disconnect device in selected area

【Arm All】 devices in selected area arm

【Disarm All】 devices in selected area disarm

【Start Manual Record of Area】 enable manual record in selected area

【Stop Manual Record of Area】 disable manual record in selected area

【Main Stream All】 connect device with main stream in selected area

【Sub Stream All】 connect device with sub stream in selected area. If device is in connection, it should be disconnected then reconnect, then the stream changes to sub stream, otherwise, it is still in main stream.

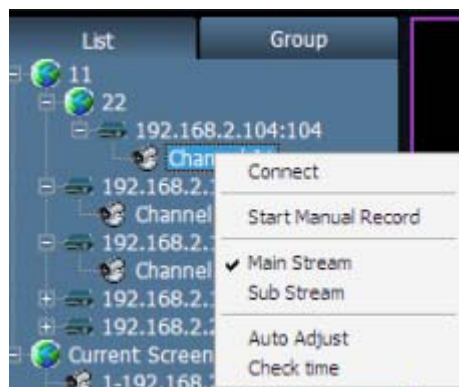
【Auto Adjust All】 device in selected area auto adjusts view proportion

【Full Display All】 device in selected area adjusts image proportion according to the size of window of multi-picture view.

【Check Time All】 device in selected area synchronize time with PC.

Notice: Please double click Channel 01 below device or drag Channel 01 to window to view video.

Select one device; right click on Channel, pop-up dialog as:



【Connect】 connect one channel of selected device, only support Channel 01 presently.

【Start Manual Record】 enable manual record for selected channel, label auto changes into label of disable-manual-record label.

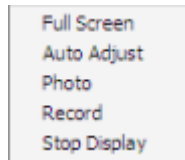
【Main Stream】 connect device with main stream, on tick means current selection is main stream.

【Sub Stream】 connect device with sub stream, on tick means current selection is sub stream.

【Auto Adjust】 selected channel auto adjusts view proportion

【Check Time】 selected channel synchronizes time with PC.

Right click on preview window, pop-up dialog as:



【Full Screen】 select full screen for software full screen view, double click to view full screen for single window.

【Auto Adjust】 on tick to display according to image proportion, off tick to display according to window's size of multi-picture view.

【Photo】snapshot selected window then save to hard disk, default format is JPG.


【Record】 enable manual record for selected window, auto on tick Record

【Stop Display】 stop display for selected window

Notice: after stop display, device is still in connection, if device is on recording, it keep recording after stop display.

2.4.2 Cycle preview

Only support cycle mode to view video on group list mode, it needs to set groups before enabling cycle mode, details refer to instruction of “Group Management”.

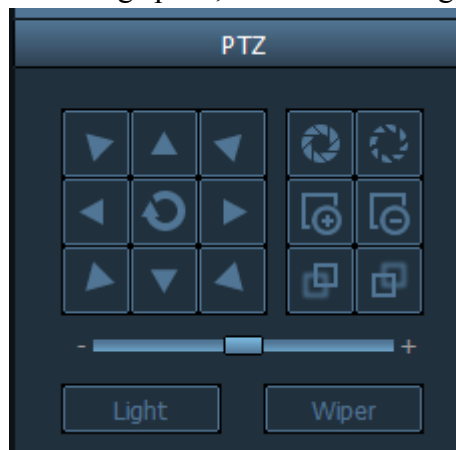
Click  enable cycle mode, click again to disable cycle mode.

For cycle mode view, to set cycle time, click “Config” then “Record Management” to configure cycle time, default value is 5 seconds.

2.5 PTZ control

2.5.1. PTZ control

We can move PTZ to 8 directions through controlling direction buttons, and drag the slider to change PTZ moving speed, “-” is for slowing, “+” is for accelerating.





Enlarge aperture, need device hardware support



Narrow aperture, need device hardware support



Enlarge focus, need device hardware support



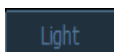
Narrow focus, need device hardware support



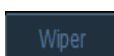
Focus forward adjustment, need device hardware support



Focus back adjustment, need device hardware support



Light button, click to light on/off, need device support



Wiper button, click to wiper on/off, need device support

2.5.2 Preset position configuration

Client software supports 256 preset positions, for actual amount of preset positions, it depends on camera supported.

PRESET	
NO.	PresetName
001	Preset001
002	Preset002
003	Preset003
004	Preset004
005	Preset005
006	Preset006
007	Preset007
008	Preset008
009	Preset009
010	Preset010

Goto Set Del

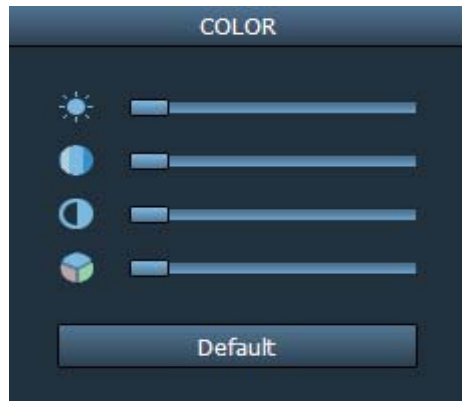
【Set preset position】 Select window to set preset position, then select preset position number, click “Set” button.

【Goto preset position】 Select window to call preset position, then select preset position number, click “Goto” button.

【Del preset position】 Select window to delete preset position, then select preset position number, click “Del” button.

2.5.3. Image color configuration

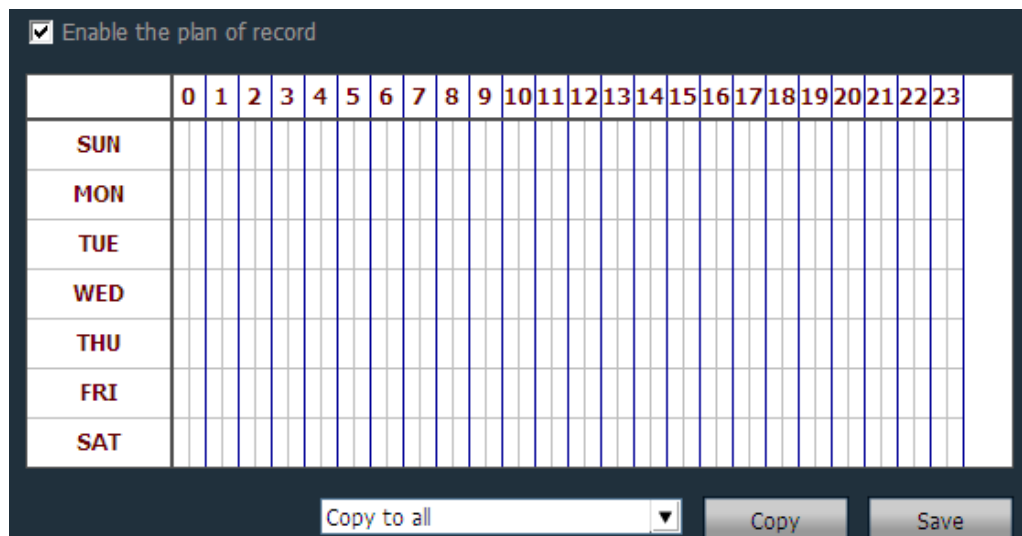
Click “Color” button to access image color adjustment dialog.



-  Adjust image brightness
-  Adjust image white balance
-  Adjust image contract
-  Adjust image color
-  Default Recover to factory set color

2.6 Video management

2.6.1. Plan of record



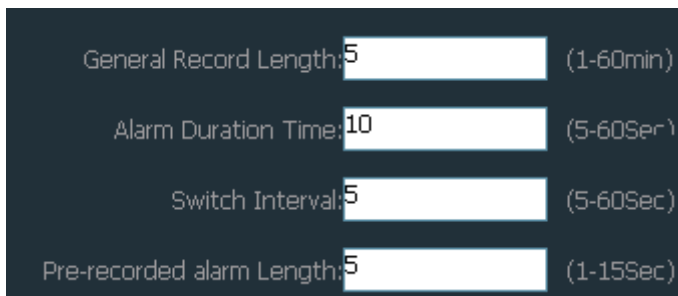
Click “Config”, then “Record Management”, then tick “Enable the plan of record”, picture as above:

- 【enable plan record】 Select channel to record, then left click to drag out a green box(the box range is the time to record). Click “Save” to finish.
- 【disable plan record】 Untick “Enable the plan of record”, then click “Save”. Or cancel the green box then click “Save”. Left click on green box then drag mouse to cancel.

Notice: if to set same plan to all devices, click “Copy” then “Save” after set up one device, then all devices enabling plan.

【General Record Length】 Single record file’s size, the factory set is 5-min size,

single record file's size can be 1-60 minutes. To modify size in General Record Length blank then click Save.

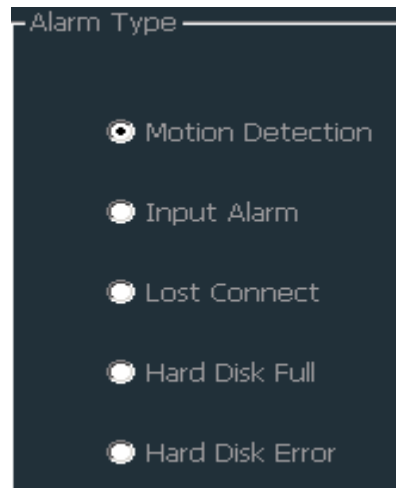


General Record Length: 5 (1-60min)

Alarm Duration Time: 10 (5-60Sec)

Switch Interval: 5 (5-60Sec)

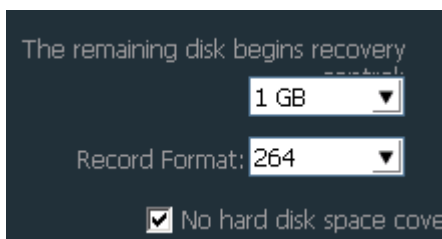
Pre-recorded alarm Length: 5 (1-15Sec)



Alarm Type

- Motion Detection
- Input Alarm
- Lost Connect
- Hard Disk Full
- Hard Disk Error

【Recovery of remaining disk】 The selecting range is 1-10G, when space is less than selected range, it should save record to another disk or cover the former records.



The remaining disk begins recovery

1 GB

Record Format: 264

No hard disk space cover

【Record format】 It can support 264 and AVI formats, and for 264 format, only can play with factory player.

【Cover disk after fulfill】 Tick to enable deleting the most former record when all disks space are less than selected recovery space. If no tick, recording stops when all spaces are less than selected recovery space.

	Disk	Total size(G...)	Available si...	Path
<input type="checkbox"/>	C:	36.638	32.472	C:\MediaRecord\
<input checked="" type="checkbox"/>	D:	63.420	42.554	D:\MediaRecord\
<input type="checkbox"/>	E:	65.908	56.870	E:\MediaRecord\
<input type="checkbox"/>	F:	66.858	60.104	F:\MediaRecord\

【Record Save Path】 Software auto detects and lists on tablet after set-up. The default path is D:\.

Note: Software can support 20 pieces of disk partitions.

2.6.2. Alarm Record

◆ Alarm Type:

【Motion Detection】 Alarm on motion detection

【Input Alarm】 Alarm on external input signal

【Lost Connect】 Alarm on lost connection

【Hard Disk Full】 Alarm on hard disk is full

【Hard Disk Error】 Alarm on hard disk error

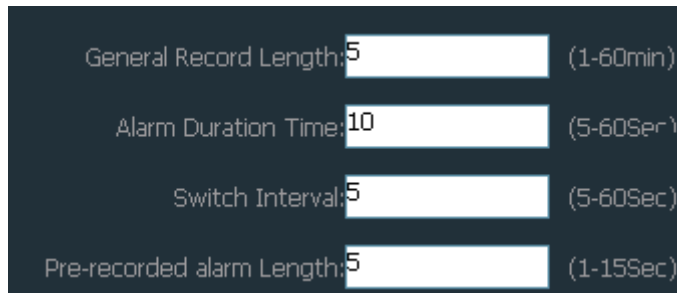
◆ Linkage Alarm:

【Popup Video Window】 Tick for popping up windows on alarm

【Electron Map Alarm】 Tick for flashing on electron map on alarm

【Linkage Record】 Tick for recording to local disk on alarm

【Sound Alarm】 Tick for displaying sound on alarm



General Record Length: 5 (1-60min)

Alarm Duration Time: 10 (5-60Sec)


Switch Interval: 5 (5-60Sec)


Pre-recorded alarm Length: 5 (1-15Sec)

【Alarm Duration Time】 Alarm duration time, default is 10 seconds, selecting range is 5-60 seconds.

【Pre-recorded alarm Length】 Pre-recording's length on alarm, default is 5 seconds, selecting range is 1-15 seconds.

◆ Arm and Disarm

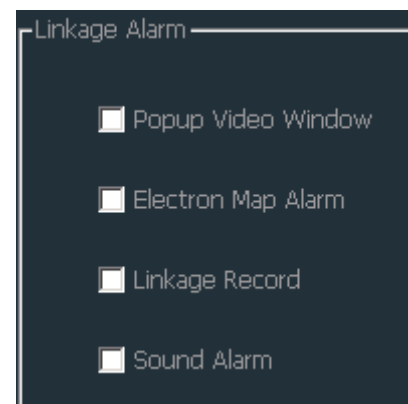
【Arm】Press “Preview”, select area or device for arming, after arming it will display  logo in front of device IP or name.

【Disarm】 After disarm, logo  disappears.

Note: 1. Linkage alarm only is available on arm condition, if device disarms, linkage alarm is not available.

2. If new alarm happens on alarm, the alarming time should extend.

3. Motion detection and input alarm can linkage popup video window; electron map alarm, linkage record and sound alarm, others only support sound alarm.



Linkage Alarm


Popup Video Window

Electron Map Alarm

Linkage Record

Sound Alarm

2.6.3. Manually Record

Select monitoring windows, click  button or right click on windows to select to record, for recording time and path, referring to schedule record.


Record priority:

1. If enable schedule record and alarm record at the same time, it triggers alarm in schedule alarm, system should stop schedule alarm and runs alarm linkage record.


2. If enable schedule record and alarm record at the same time, then enable manually recording when alarm linkage record happens, system should stop schedule record and alarm record, and run manually recording.

2.7 Playback.


2.7.1. Playback by searching time


 Play button; press this button for playing record

 Pause button; press this button for pause


 Single frame play; press this button for single frame play, one click one frame picture



 Snapshot button; select windows then press this button for snapshot

 Enlarge button; press this button then select area for enlarging on windows

 Full screen button; press this button for full screen show, double click on single windows for one windows full screen

 Drop down options for selecting playing speed, default is normal

 Sound button; click to sound on/off, default is closed

 Input time point then click  to go to selected time to start playing

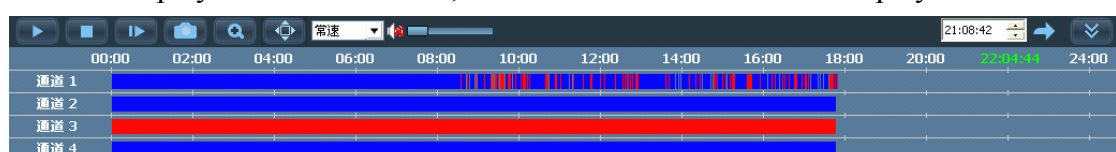
【Record search】

All Record						
2011/09						
SUN	MON	TUE	WED	THU	FRI	SAT
				01	02	03
04	05	06	07	08	09	10
11	12	13	14	15	16	17
18	19	20	21	22	23	24
25	26	27	28	29	30	

Step 1: define file type and searching time

Step 2: select windows to playback, then select device channel on list tree

Step 3: if there is record file matching to searching condition, the file should display on timeline forum, then double click on channel to playback

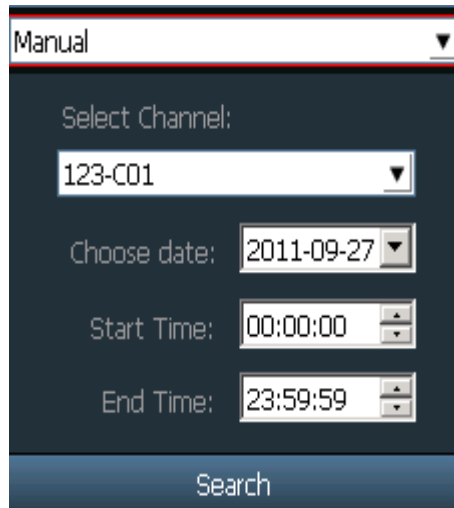


Schedule record:  alarm record:  manually record: 

Note: move the mouse on timeline, it will display time point of current position,

click to view the video; right click on timeline, the display length should turn into 2-hour from 24-hour, it means the time point extending

2.7.2 Searching-file Playback



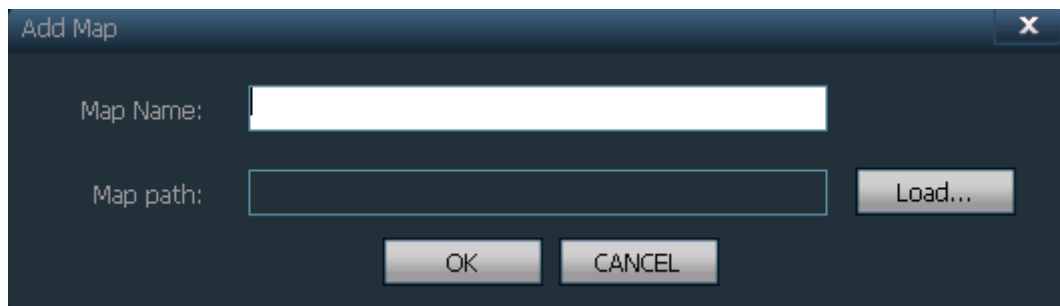
Step 1: select file type and device channel

Step 2: select searching time then click “Search”, the eligible files should list on device tree

Step 3: select playback windows then double click record file to view video, it can support one video displaying on four windows at the same time

2.8 Electron map

2.8.1 add map



Step 1: click “Add Map” or right click to select “Add a new map”


Step 2: input map name in dialog “Map Name”, then load map

Step 3: click “OK” to add map to software

2.8.2 Edit Map

After added map, then go to edit map

Step 1: click “Edit Map” on map, or right click to select edit map

Step 2: drag device channel to map, then it displays , double click on it to view image

Step 3: after edit, click “Stop Editing”

It needs to enable “Electron alarm map” of alarm linkage for logo flashing

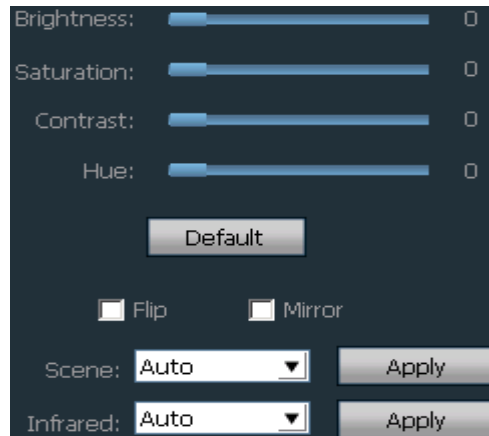
2.8.3 Delete Map

Select map name then click “Delete Map” to cancel map

2.9 Parameters configuration

To connect device for configuration on parameters configuration page (double click device channel, the image should display on right side image frame).

2.9.1Color



【Brightness】 drag slider to select best brightness

【Saturation】 drag slider to select best saturation

【Contrast】 drag slider to select best contrast

【Hue】 drag slider to select best color

【Default】 click to load default value

【Flip】 tick for image turnover(need device support)

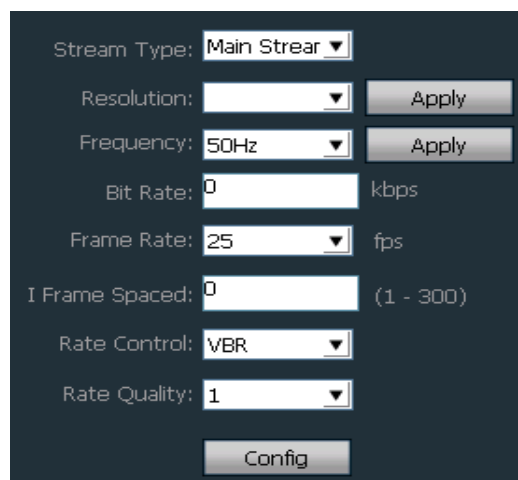
【Mirror】 tick for mirror image(need device support)

【Scene】 white balance: support auto, indoor, outdoor. Default is auto(need device support)

【Infrared】 night vision: support auto switch, manually switch. Default is auto (need device support)

Note: it can not configure if device does not support that function.

2.9.2Video



【Stream Type】 support main stream and second stream

【Resolution】 different resolution for different model

【Frequency】 support 50Hz and 60Hz, default is 50Hz

【Bit Rate】 different bit rate for different model

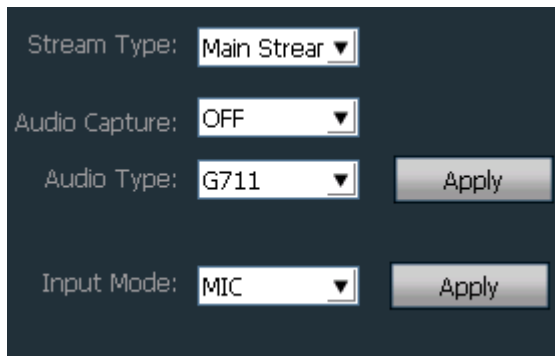
【Frame Spaced】 N standard or 60Hz device has range 1-30fps, P standard or 50Hz device has range 1-25fps

【I Frame Spaced】 the interval of two I frame of image

【Rate Control】 support VBR and CBR

【Rate Quality】 support 6 levels, lower level with better quality

2.9.3 Audio



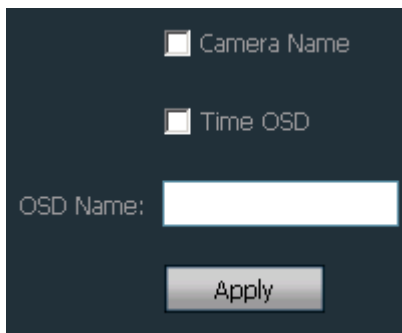
【Stream Type】 support main stream and second stream

【Audio Capture】 ON or OFF

【Audio Type】 G727, G711 and AMR

【Input Mode】 MIC or Line In

2.9.4 OSD

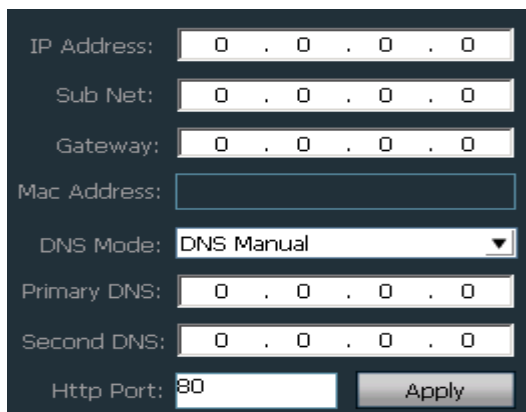


【Camera Name】 tick to enable adding name on image

【Time OSD】 tick to enable adding time on image

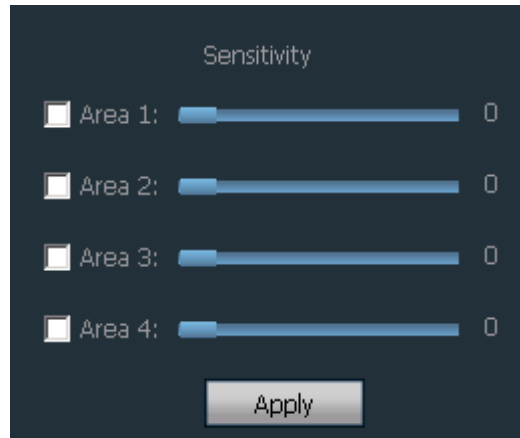
【OSD Name】 input OSD name then click Apply button, it can support 18 bit

2.9.5 Network



To configure network parameters on current condition, the software only displays network parameters of current device, despite it is manually configured or DHCP.

2.9.6 Motion Detection



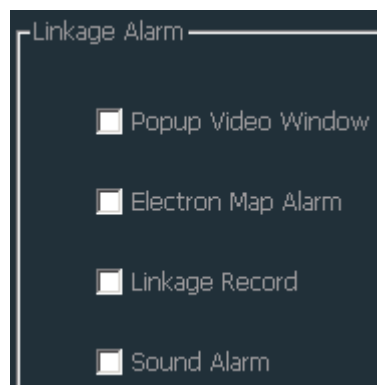
Configure motion detection:

Step 1: tick area, then it display a green dialog on left image

Step 2: drag the green dialog to position wanted, and configure its size

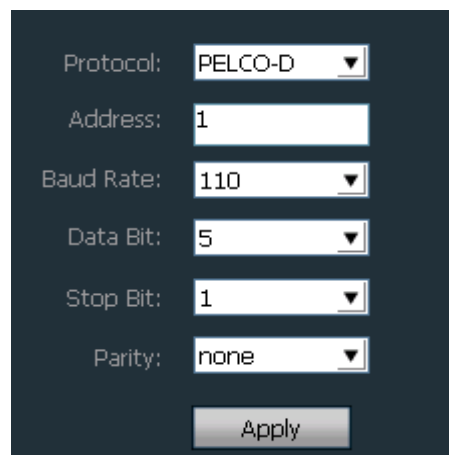
Step 3: configure sensitivity of alarm area detection. Sensitivity range: 0-75, default is 35, the greater the value, the more sensitive, and vice versa.

Step 4: click “Linkage Alarm” to select alarm type



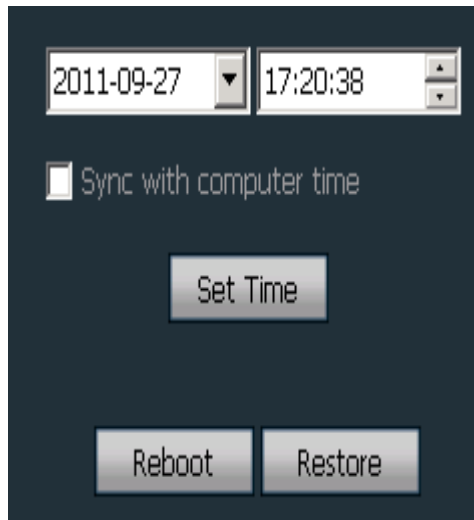
Step 5: enable arm function for device, otherwise it can not support alarm linkage

2.9.7 PTZ



For ptz control, it should be fulfill with right parameters, different ptz has different protocol, protocol code and baud rate.

2.9.8 System



After select time, click “Set Time” to modify time of device

【Sync with computer time】 tick then click “Set Time” to enable

【Reboot】 click to reboot

【Restore】 click to restore factory settings, after restore, need to reboot to reconfigure network parameters of device for reconnection

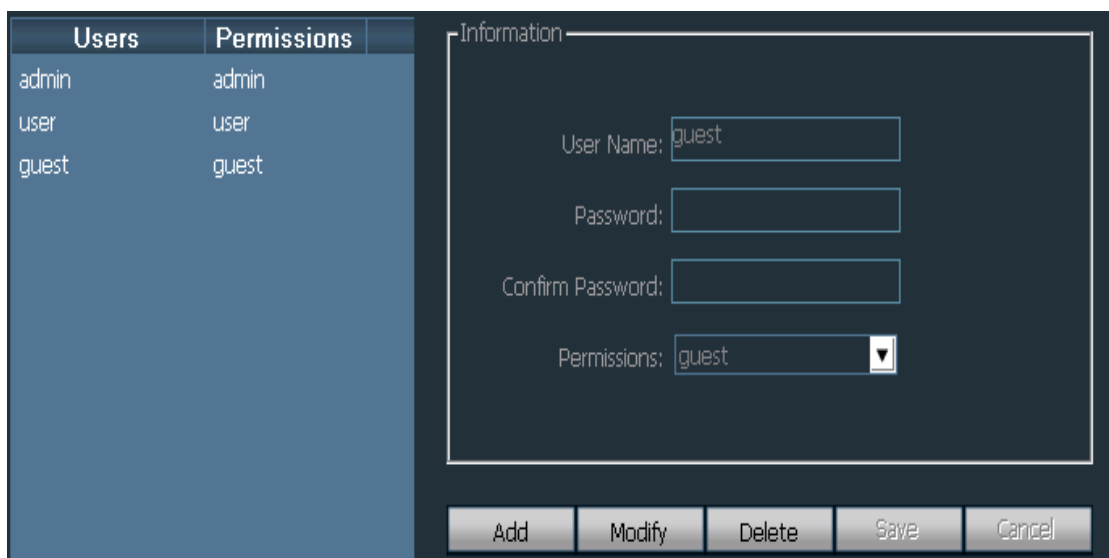
2.10 User management

Factory set administrator name is admin, no password. Login with administrator then add, delete and configure user authority. User authority includes three levels: admin, user and guest.

“admin” authority: administrator, enable to manage device, manage user, view video, playback video, configure map, inquire log, and exchange user and exit software

“user” authority: enable to view video, playback video, configure map, inquire log, exchange user and modify password

“guest” authority: enable to view video, exchange user and modify password



2.10.1 Add User

Step 1: login with admin then click “Config” then “User Management”

Step 2: click “Add” button, input name and password then select permission

Step 3: click “Save” button to finish

2.10.2 Delete User

Step 1: login with admin then click “Config” then “User Management”

Step 2: select user then click “Delete” button

2.10.3 Modify User Authority

Step 1: login with admin then click “Config” then “User Management”

Step 2: select user then click “Modify”

Step 3: select permission then click “Save”

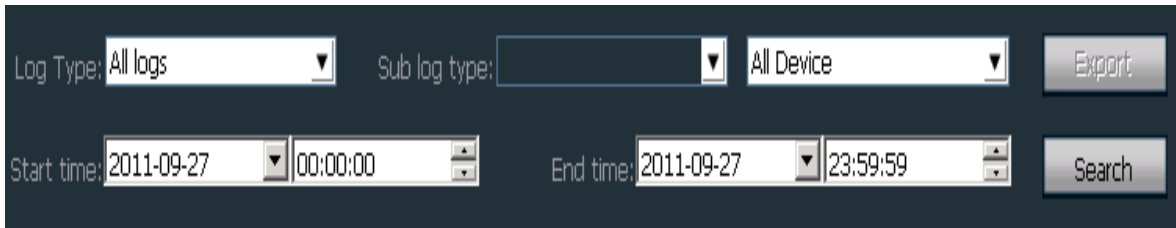
2.10.4 Modify User Password

Step 1: click “Config” then “User Management”

Step 2: select user then click “Modify”

Step 3: input new password then click “Save”

2.11 Log



The screenshot shows a dark-themed interface for log management. It features several dropdown menus and buttons. The 'Log Type' dropdown is set to 'All logs'. The 'Sub log type' dropdown is empty. The 'All Device' dropdown is set to 'All Device'. There are two 'Export' buttons. The 'Start time' is set to '2011-09-27' and '00:00:00'. The 'End time' is set to '2011-09-27' and '23:59:59'. There is a 'Search' button.

Log Type:

【All logs】 record all information of system

【System log】 record information of user login, logout and user configuration, etc.

【Operation log】 record user operations

【Alarm log】 record device alarm information

2.11.1 Log Retention Time

Step 1: click “Config” then “Other Settings”

Step 2: select retention time for log, it supports 1, 2, 3 or 6 months, then click “Save” button

2.11.2 Inquire Log

Step 1: select log type and sub-log type

Step 2: select device for inquire log, default is “All Devices”

Step 3: select start time and end time then click “Search”

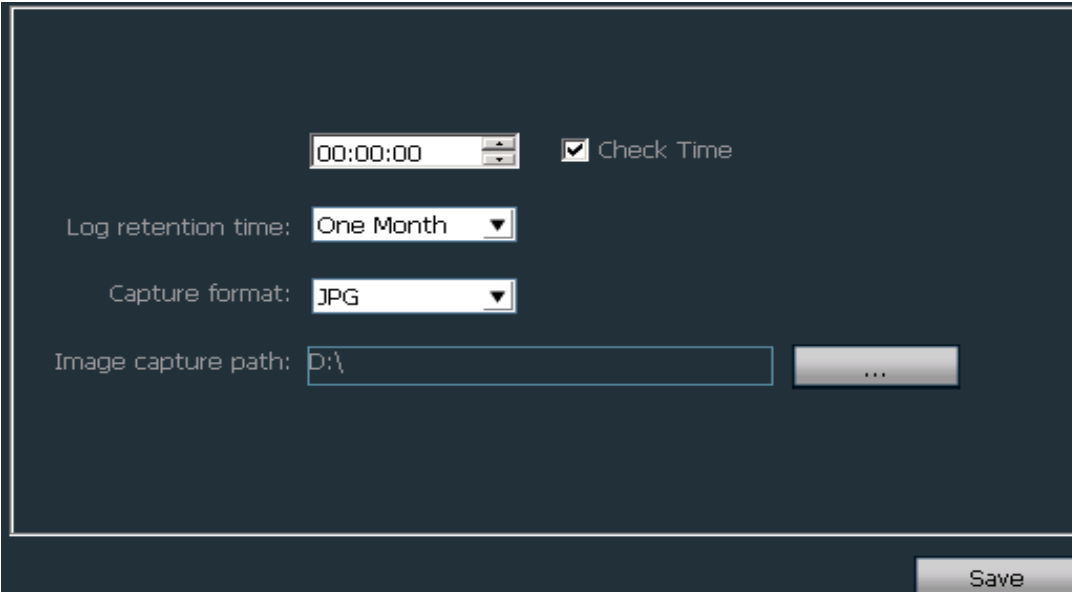
2.11.3 Log Backup

Step 1: select log type and sub-log type

- Step 2: select device to inquire, default is “All Devices”
Step 3: select start time and end time then click “Search”
Step 4: click “Export” then select backup path

- Note: 1. It should search log before backup
2. Exported log is with Excel format
3. Each Excel table only saves 5000 pieces of logs, extras will be saved as another Excel table, and so on

2.12 Other settings



- 【Multi-screen】 one computer host can support three monitors at the same time
- 【Time verify】 tick and configure time, software verify time to all devices at appointed time to match time on PC
- 【Snapshot format】 format of snapshot, support JPG and BMP
- 【Snapshot save path】 the save path of snapshot
- 【Save】 click “Save” button to enable configuration
- 【Exchange User】 click “Logout”, after that, click on other page to re-login