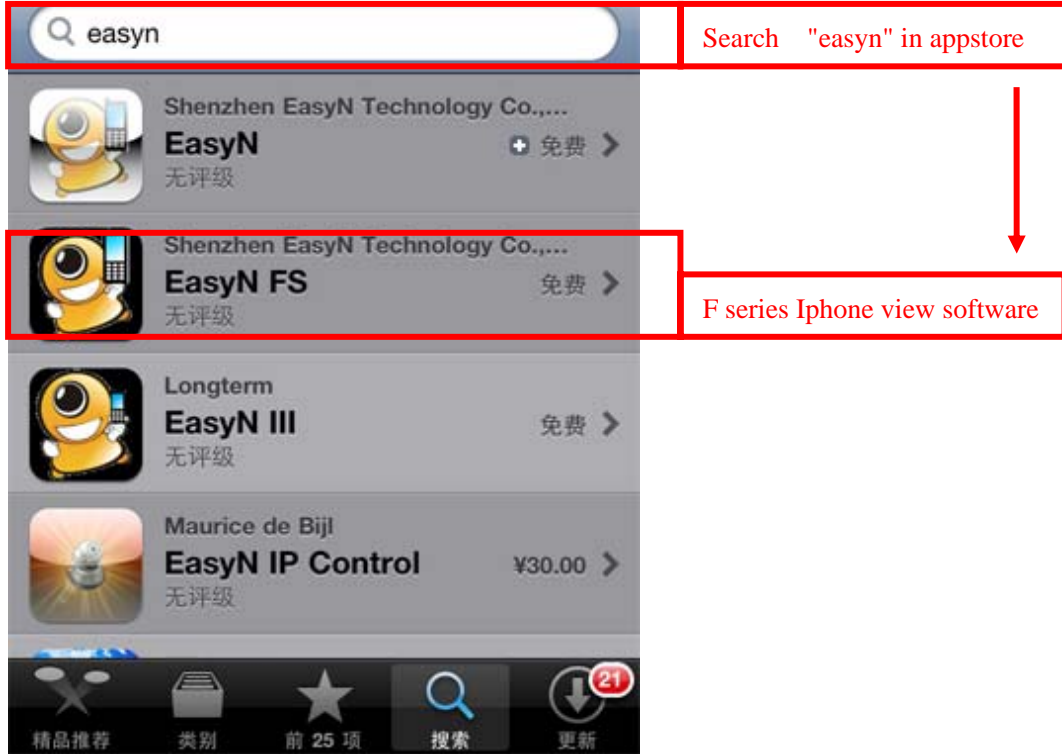




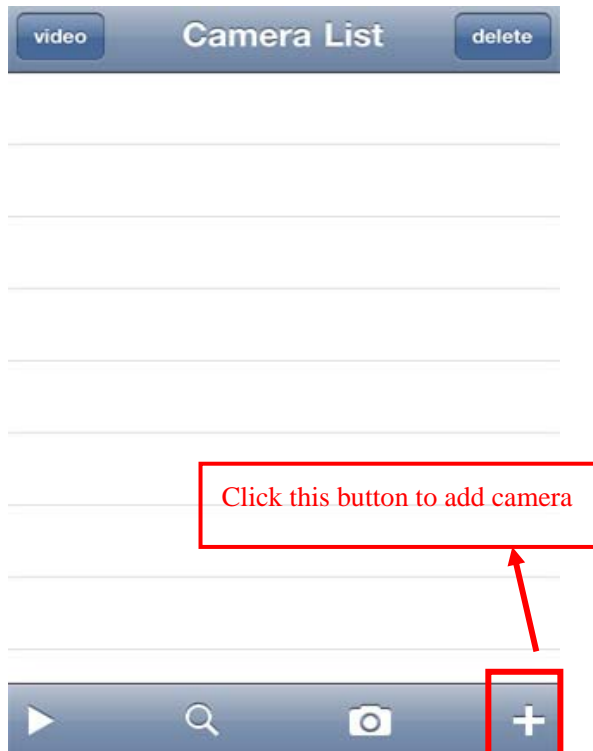
FS Series Mobile Phone Watch Manual

FS series Iphone view guide

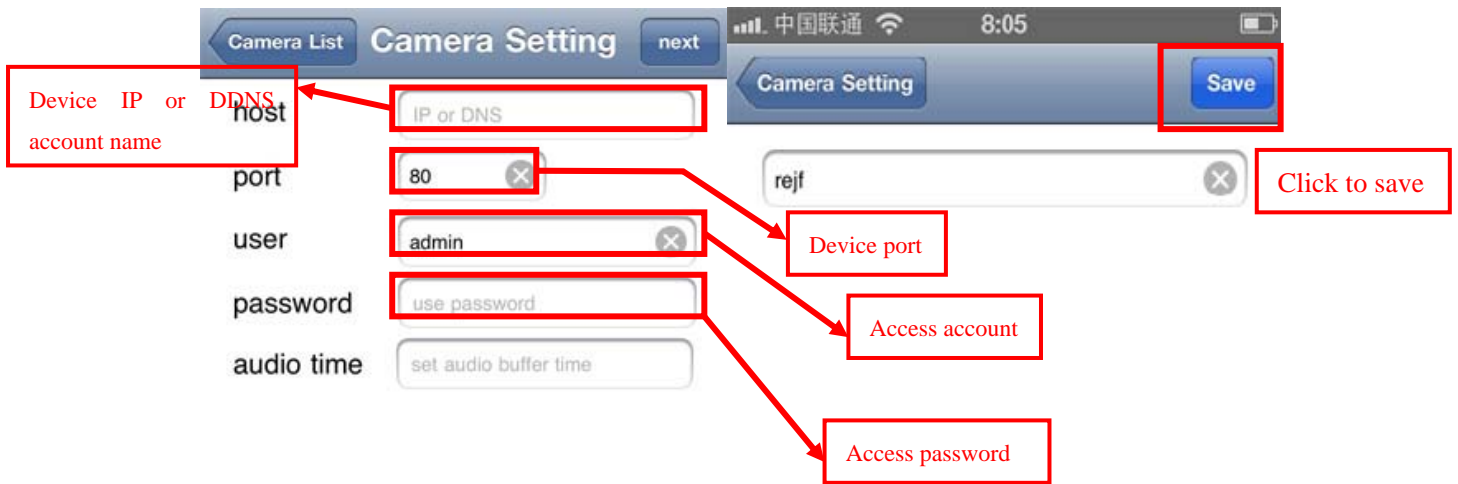
1. Search "easyn" in appstore, install "EasyN FS" software:



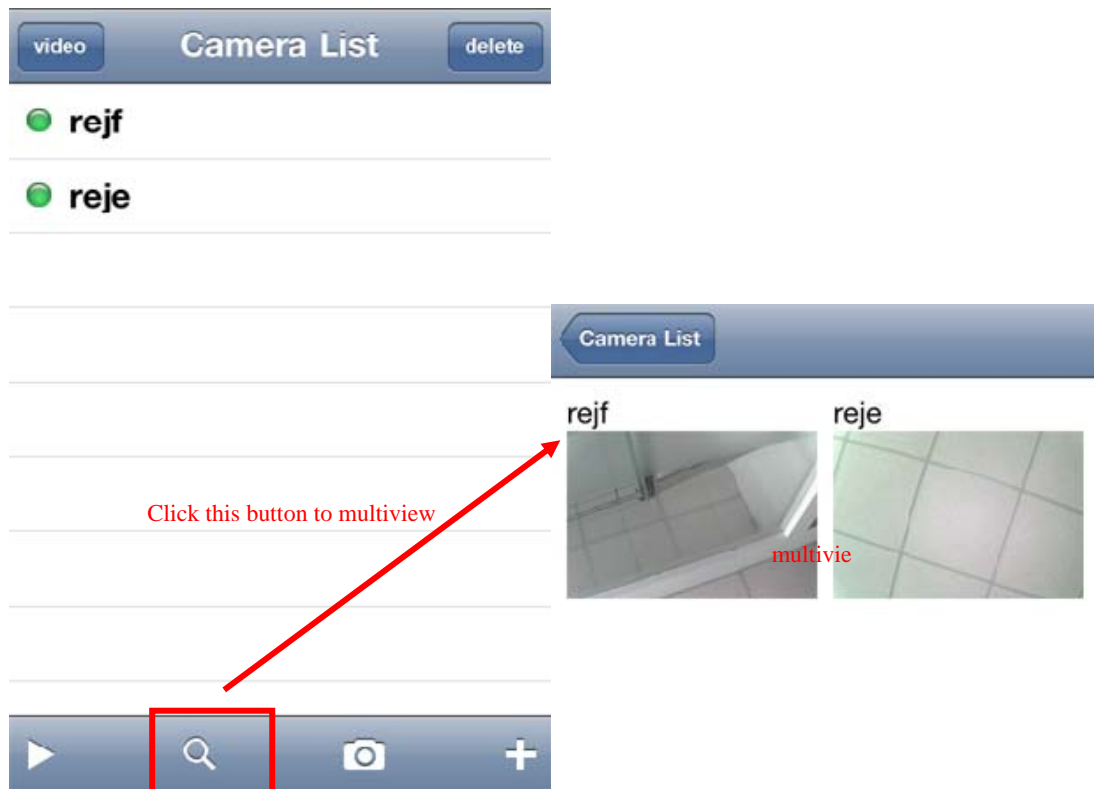
2. Add device. After installation, click into camera list to add device.



2.1 Input device information then save.



3. Multiview



4. Select a camera to operate, support PTZ control(PTZ buttons are hidden, as the below picture showed.), online snapshot, patrol up and down, patrol right and left, mirror.



5.

5. Configure camera parameters , such as brightness, contrast, volume. And click "Alarm" button for details.



Configure parameters

Help file

6. Delete device



Click "delete"

Delete specified device